

Enea Group in numbers



Resources

6.2 GW

Electrical power installed

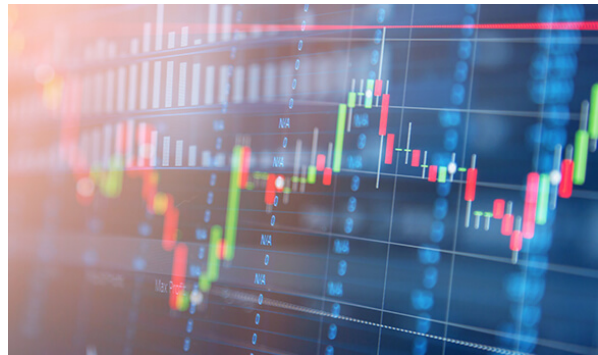
- 391m tonnes Potential of 3 licenced areas
- 122.4k km of distribution lines Including connections
- 16.1k Employees
- 2.5m Customers

FINANCIALS IN 2017

PLN 11.406m

Net sales revenue

- PLN 2.684m **EBITDA**
- PLN 1.165m Net profit
- PLN 4.187m **CAPEX**



TARGETS FOR 2025

10.9m tonnes

Own demand for bituminous coal

- 5.8-6.3 GW Conventional electrical power installed
- 20.1 TWh Sale of electricity
- 38% **EBITDA** growth on 2015
- PLN 26.4bn Basic investment budget